

PHARMACEUTICAL METAL DETECTOR

NMD

530 Series

MEDIC[®]



MEDIC[®]

NMD530 Series(MEDIC) Pharmaceutical type metal detector is the most delicate system among NMD530 Series range products. Offering unparalleled accuracy in the detection of metallic contaminants in pharmaceutical products, it can detect and reject microscopic particles in pharmaceutical production lines at speeds of up to 15,000 tablets per minute. Even in difficult application, our innovative technology continues to provide exceptional performance.

Robustly designed and easy to install and applicable to various types of production line due to its compact size and simple desorption of a stainless steel grade 316 chute and a solenoid type reject diverter with a transparent PVC rejecting bin.

- Sensitivity Well Beyond Industry Standards
- Metal Separation Using a Solenoid Type Reject Diverter System
- Full Color Touch Screen (7 inch TFT LCD)
- User-Friendly Operating System
- Digital Signal Processing (32-Bit Microprocessor)
- Auto-Setting Function
- Powerful Durability (IP66)
- Smart Self-Diagnosis
- USB Port for Data Management
- RS232C & 485 Data Link Ports
- Security System (3-Level Password)
- Metal Detecting History Management
- Easy Software Upgrade
- Full Validation Document
- Variable Languages Option

NOW SYSTEMS Total Inspection Systems & solution
NOW SYSTEMS CO., LTD.



PHARMACEUTICAL METAL DETECTOR

NMD 530 Series

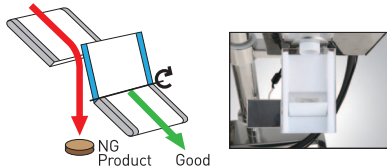


Sensitivity Well Beyond Industry Standards

- Closed coil system for perfect detection
- High quality filter for more precise detection
- Polished stainless steel 304 Detecting head can process up to 15,000 tablets per minute
- Auto absorption function for vibration, impact, noise and etc.,
- Dust Proof & Water Proof Standard (IP66) Authentication

Metal Separation Using a Solenoid Type Reject Diverter System

- A mirror-polished stainless steel grade 316 solenoid type reject diverter system
- Designed for easy dismantlement and cleaning.
- A failsafe feature for contaminated products not to be accepted in the event of a mechanism or electrical fault.
- Fitted with FDA approved material and a transparent cover enabling product flow to be monitored easily.



Full Color Touch Screen (7 inch TFT LCD)

- An intuitive and convenient full color touch screen, containing regional languages and user manual

Connectivity to External Devices

- Backing up inspection history and etc., by using a USB removable disk and reviewing the data on a PC.
- Monitoring real-time operating status for multiple metal detectors through the connective access to LAN.
- Interlocking the machine to various typed external devices through RS232C & 485 port.

Auto-Setting Function of the Inspection Items

- Auto-setting the machine for a testing product with the most suitable values even for beginners

Setting Function of a Variety of Items for Convenient Operation

- Up to 100 kinds of products are registered with each different setting value for convenient operation.

Manageable Metal Detecting History

- Detection history by various classifications and periods (in a daily / weekly / monthly / period-specified way)
- Data on detection history accessibility by LCD screen, USB disk and Printer (Optional).

Easy Software Upgrade

- Easy software upgradability by USB and touch screen whenever the latest version is available

Full Validation Document

- Full validation documentation (IQ, OQ & PQ) can be supplied for each system with additional cost.

Outputs

- Relay (5A) / 1A1B 2EA, DC24V SOL, AC220V 0.2A

Power Supply

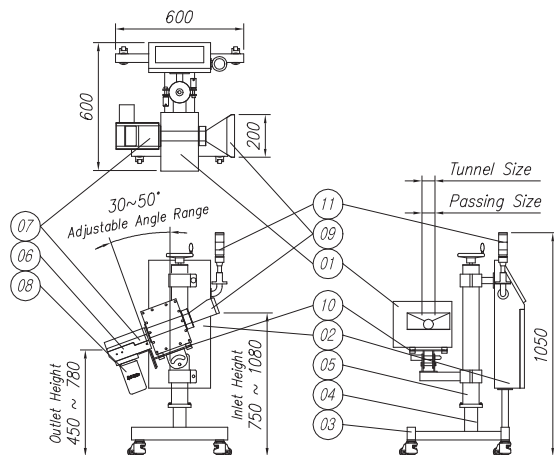
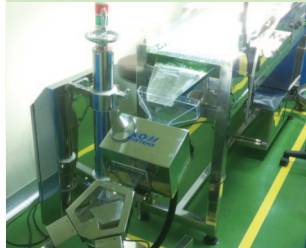
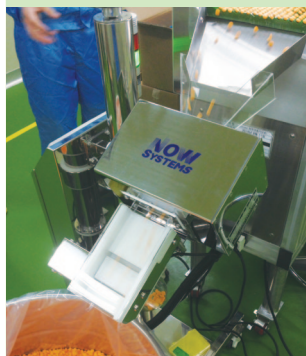
- Single Phase (110 to 220V) & Three Phase (220 to 380V and etc.,)
- Free Cycle (50/60Hz)
- Fuse (3A)

Operating Temperature

- 0°C to 50°C (advised to use the machine under normal temperature)



Application



No	Description	Material
1	Metal Detector Head	SUS304
2	Controller Box	SUS304
3	Frame	SUS304
4	Guide Pipe	SUS304
5	Up/Down Pipe	SUS304
6	Reject Diverter(Removable)	PE
7	Reject Chute	PE
8	Rejecting Bin(Removable)	PET
9	Chute(Removable)	SUS316
10	Metal Detector Bracket	SUS304
11	Tower Lamp	.

Tunnel Size (mm)	40	50	60	Inlet Height	Min. 750 ~ Max. 1,080
Passing Size (mm)	35	45	55	Outlet Height	Min. 450 ~ Max. 780
Adjustable Angle Range	30 ~ 50°				